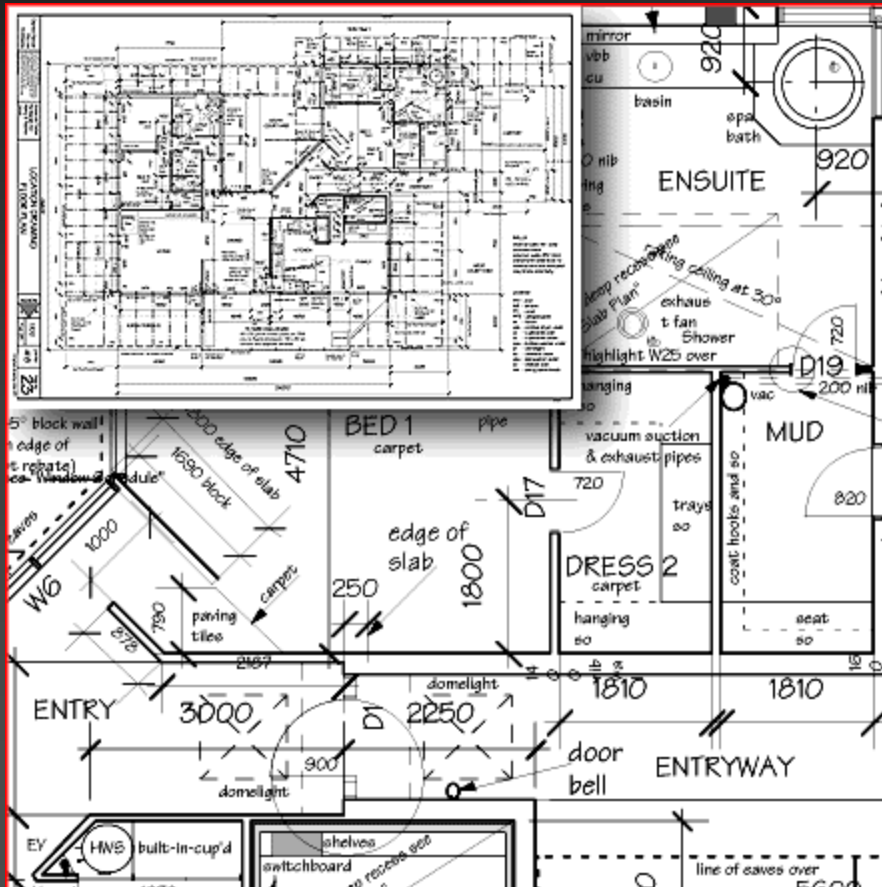
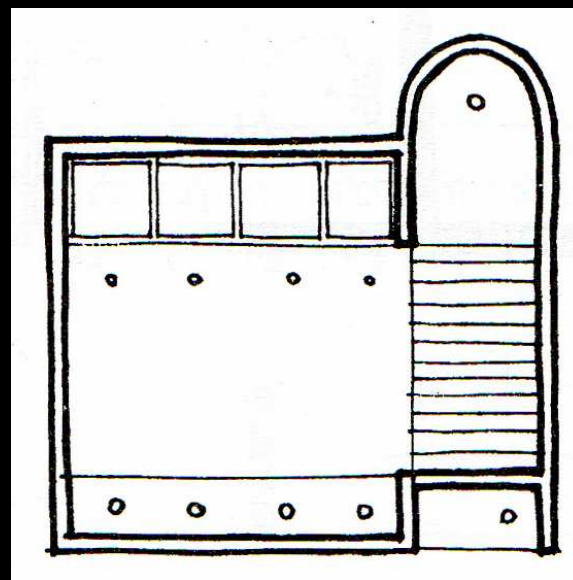
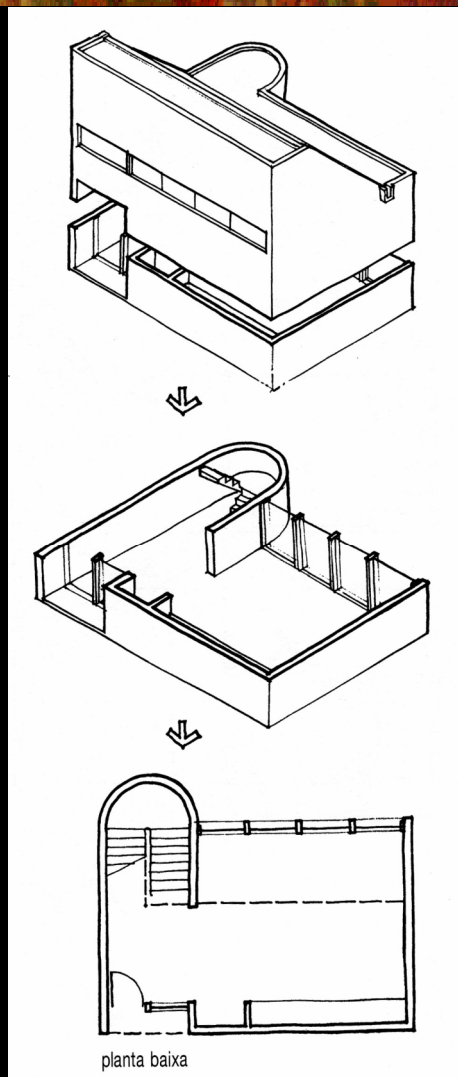


# desenho de projetos complementares

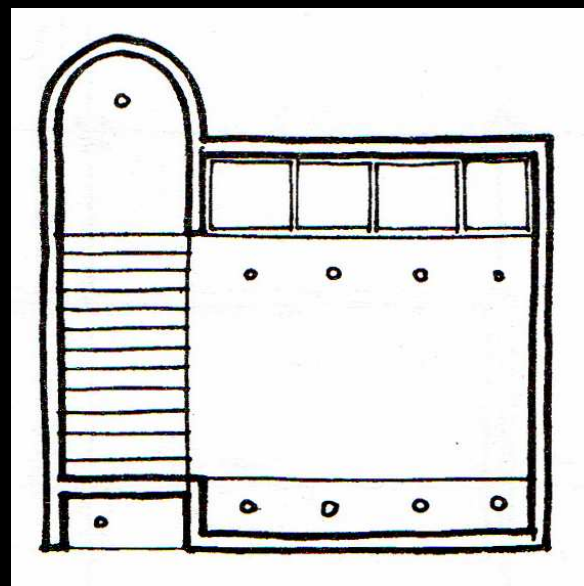


TÉCNICAS GRÁFICAS I  
TDT – UFF

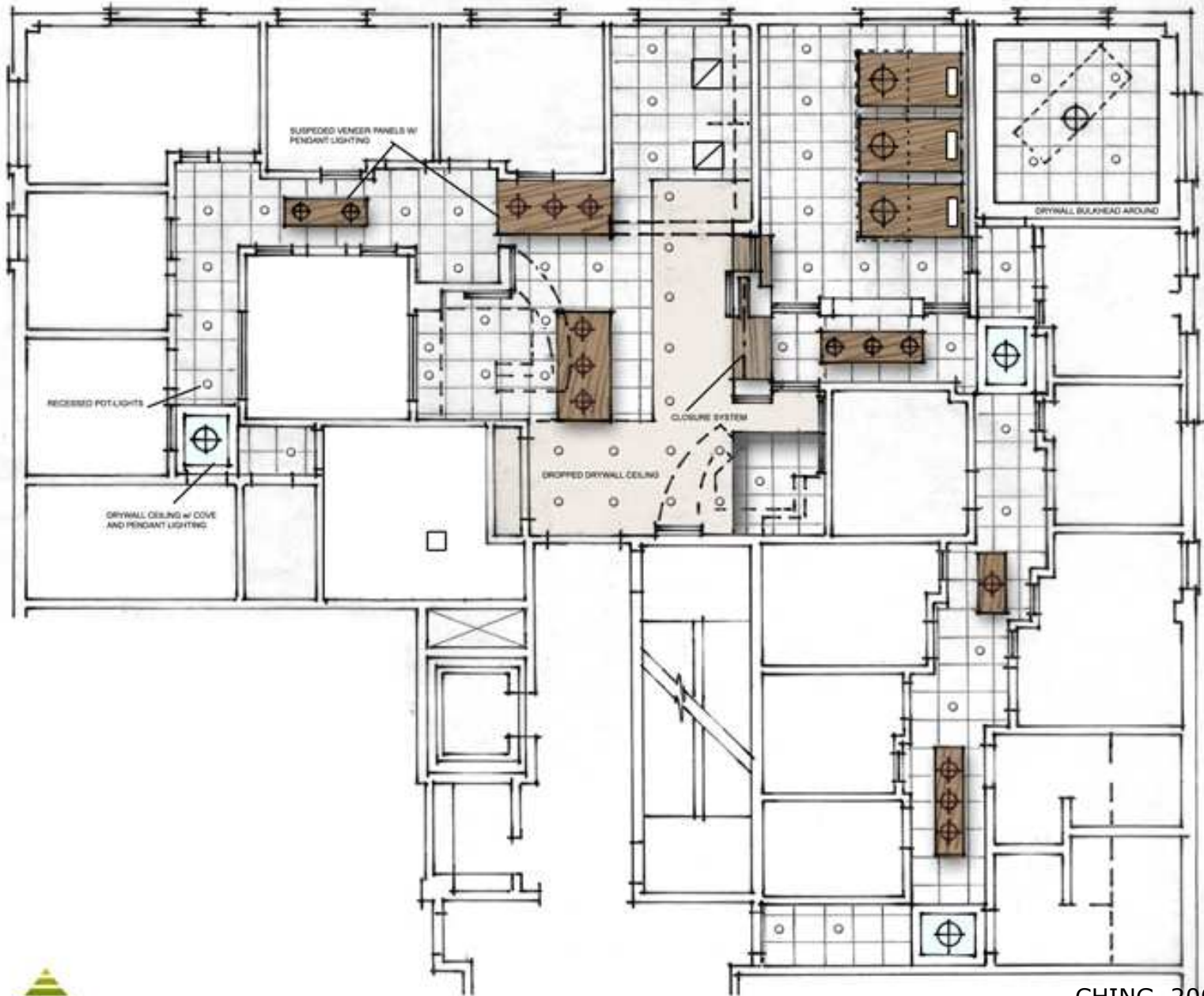
# planta de teto refletida



Planta de teto

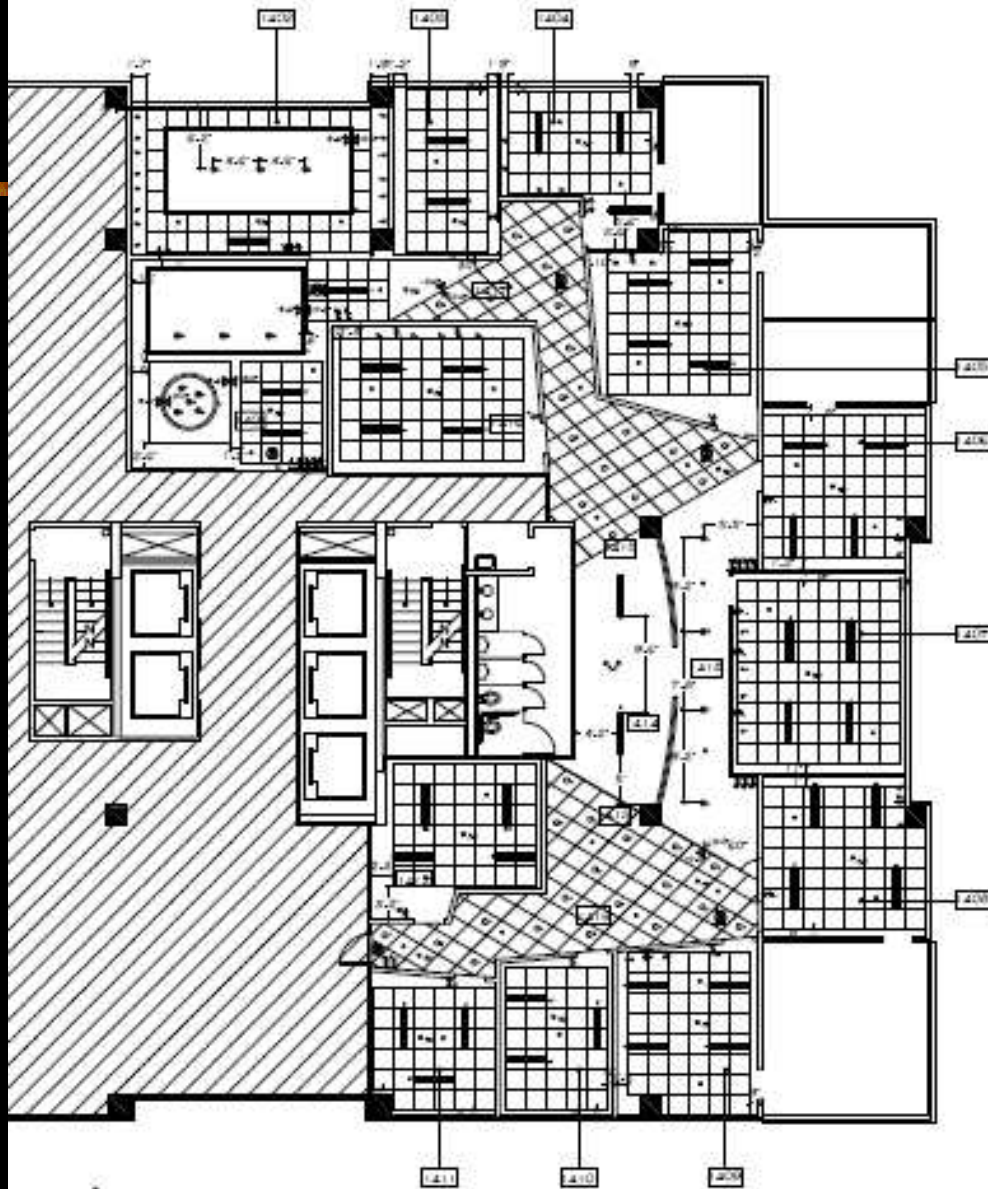


Planta de teto refletida











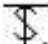
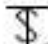
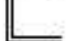








## REFLECTED CEILING LEGEND

	6x6' ACOUSTICAL TILE IN GRID SYSTEM AT 1' O.C. A.F.F.
	2x2' SUSPENDED ACOUSTICAL TILE, ARMSTRONG, PLAMENTS, NETWORK, L HORIZON.
	INDANESCENT DOWN LIGHT, LETTER DENOTES SWITCHING.
	INDANESCENT PENDANT LIGHT, LETTER DENOTES SWITCHING.
	7x14' FLUORESCENT CEILING MOUNTED LIGHT FIXTURE, LETTER DENOTES SWITCHING, UPPER CASE 'E' DENOTES EMERGENCY LIGHT.
	CEILING MOUNTED SMOKE DETECTOR
	CEILING MOUNTED SPRINKLER
	CEILING MOUNTED EXIT LIGHTS, DOUBLE FACE BOX TYPE, EXIT ARROWS DENOTE EXIT DIRECTIONS.
	CEILING MOUNTED EXIT LIGHT, SINGLE FACE BOX TYPE.
	CHANGE IN CEILING HEIGHT DENOTATION
	WALL MOUNTED LIGHT SWITCH, LOWER CASE LETTER INDICATES CIRCUITRY.
	WALL MOUNTED LIGHT SWITCH, NUMBER '3' INDICATES THREE-WAY SWITCH.
	CEILING COVE LIGHTING WITH T-8 OR T-12 FLUORESCENT LAMP AT 6'-0".

## GENERAL NOTES

1. FINAL PLACEMENT OF EMERGENCY LIGHTING TO BE INSTALLED TO MEET MINIMUM STANDARDS OF 1 FOOT CANDLE AT THE FLOOR LEVEL AS DETAILED BY ILLUMINATING ENGINEER, FIVE FOOT CANDLES FOR EXIT SIGNS.
2. ALL FLUORESCENT LIGHT FIXTURES MUST HAVE A DR OF NO LESS THAN 95.
3. FINAL PLACEMENT OF EMERGENCY LIGHTING TO BE PLACED APPROXIMATELY 8 SQUARE FEET U.O.N. FINAL PLACEMENT TO BE APPROVED BY DESIGNER BEFORE COMMENCING WORK.
4. SPRINKLER SYSTEM TO BE INSTALLED PER LOCAL BUILDING CODES WITH A MINIMUM OF ONE SPRINKLER HEAD PER 90 SQUARE FEET WITH HEADS SPACED NO MORE THAN 17.5 FEET APART BY FIRE SUPPRESSION SPECIALIST TO DETERMINE EXACT REQUIREMENTS.
5. U.O.N. ALL LIGHT FIXTURES WITHIN A ROOM WITH A SINGLE SWITCH WILL BE OPERATED BY THAT SWITCH.
6. U.O.N. ALL LIGHT FIXTURES ARE TO BE CENTERED WITHIN THE CEILING GRID.
7. U.O.N. ALL SWITCHES ARE TO BE INSTALLED AT 48" A.F.F.



REFLECTED CEILING PLAN

SCALE: 1/8" = 1'-0"

# fôrmas

## ESTRUTURAS DE MADEIRA

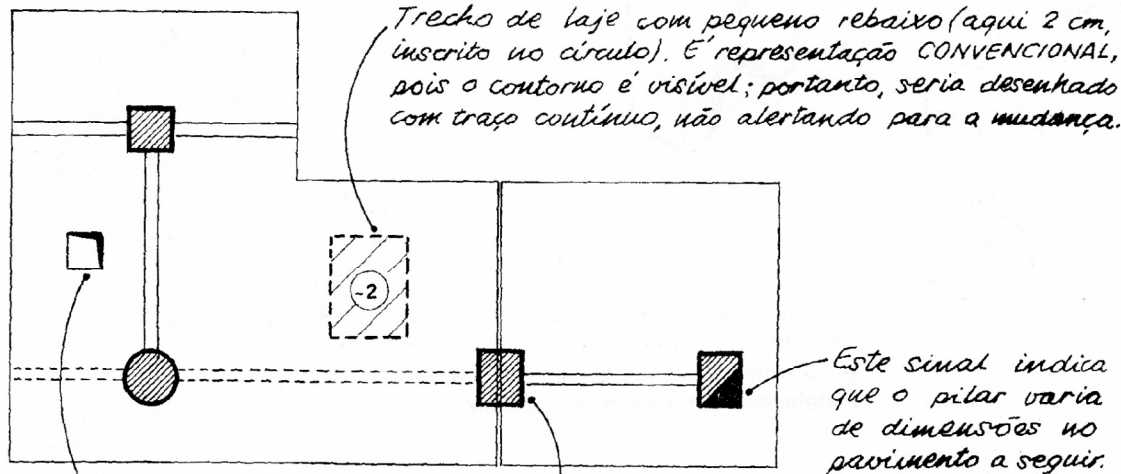
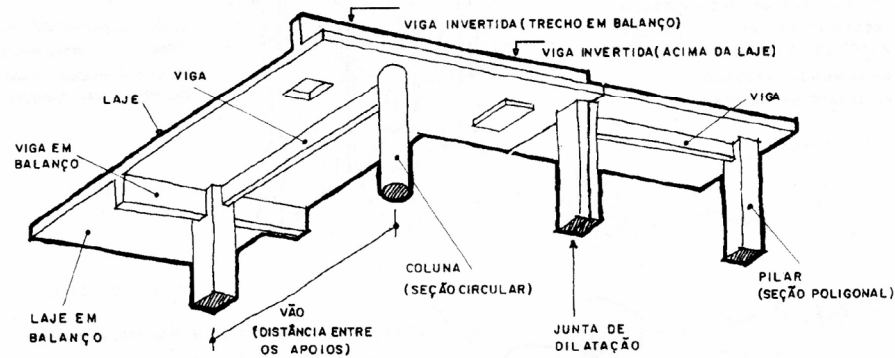
METÁLICA

DE CONCRETO ARMADO

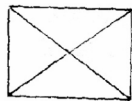
REPRESENTAÇÃO EM PLANTA


MADEIRA

ESC. 1:50

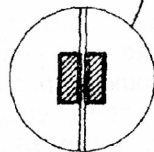


Buraco ou passagem.  
Uma 2.ª convenção é:



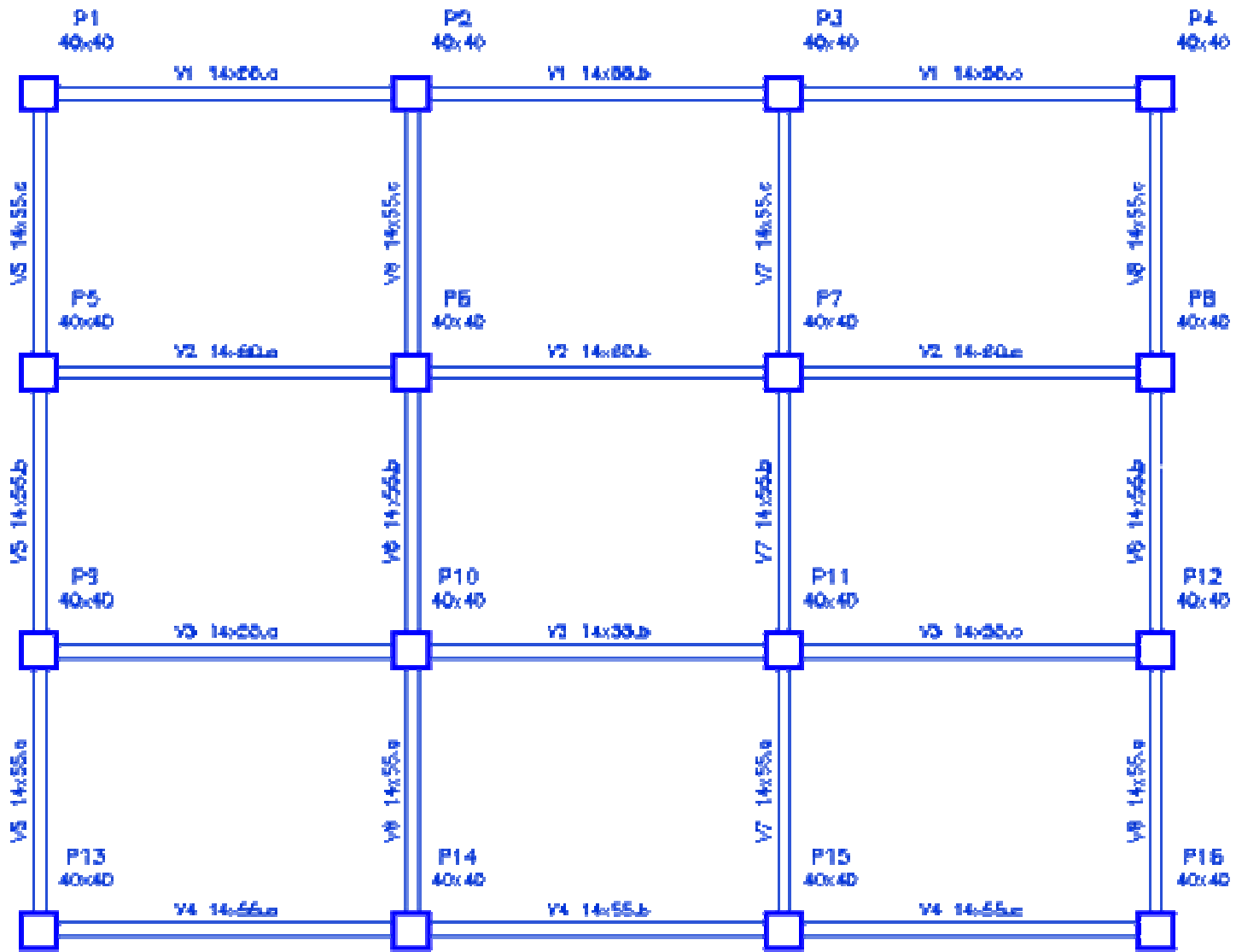
O sinal  indica eixo de simetria e permite que se desenhe apenas uma das metades da figura.

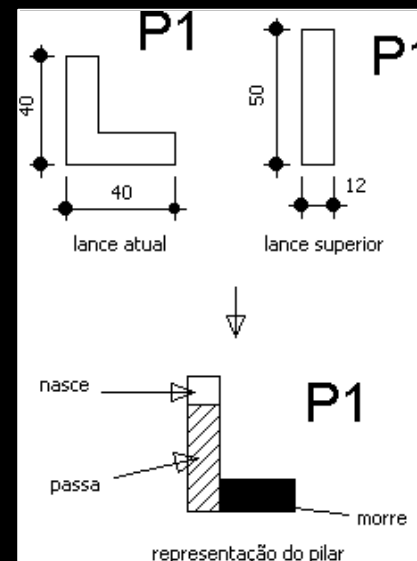
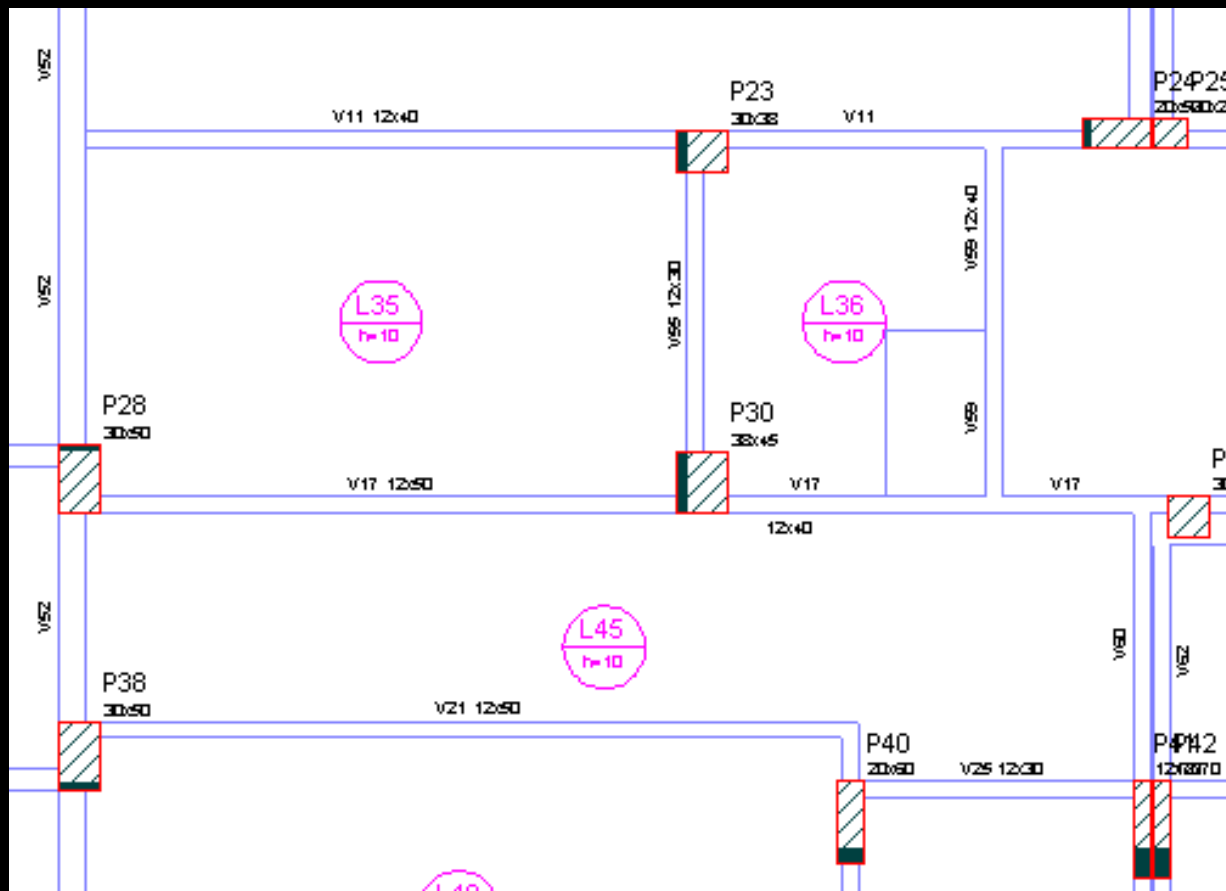
indica eixo de simetria e permite que se desenhe apenas uma das metades da figura.



Outra convenção para o mesmo pilar acima.

O hachurado pode ser substituído por pintura, em geral, vermelha.







# fundações

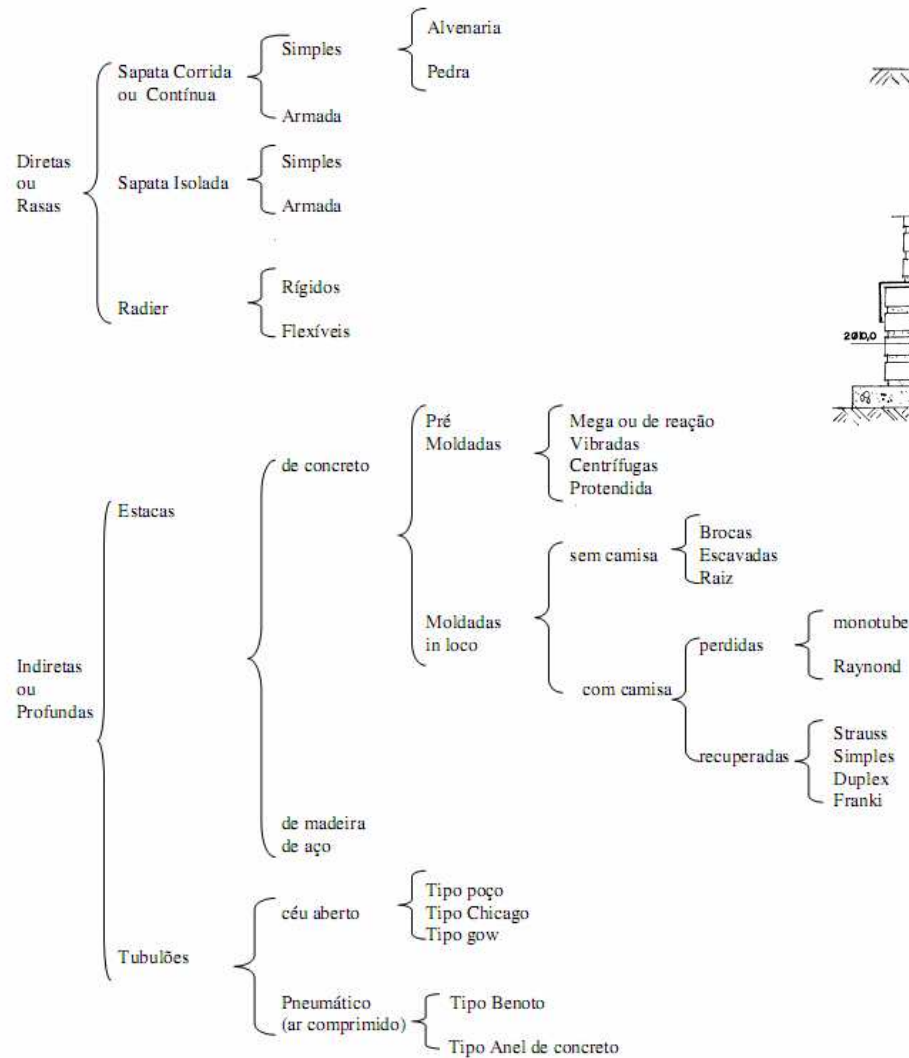


Figura 3.6 - Relação dos tipos de fundações usuais em construção

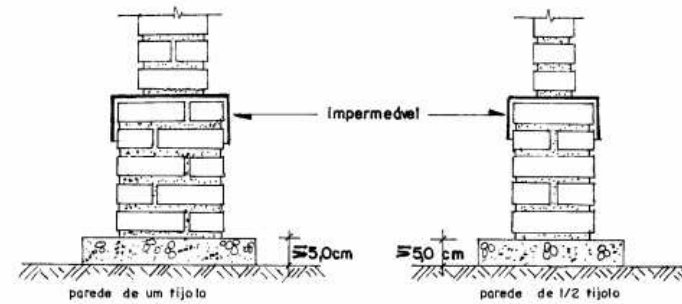


Figura 3.9 - Sem cinta de amarração (Borges, 1972)

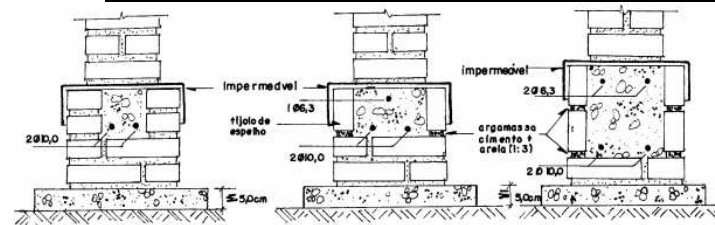


Figura 3.10 - Com cinta de amarração (Borges, 1972)

# fundações

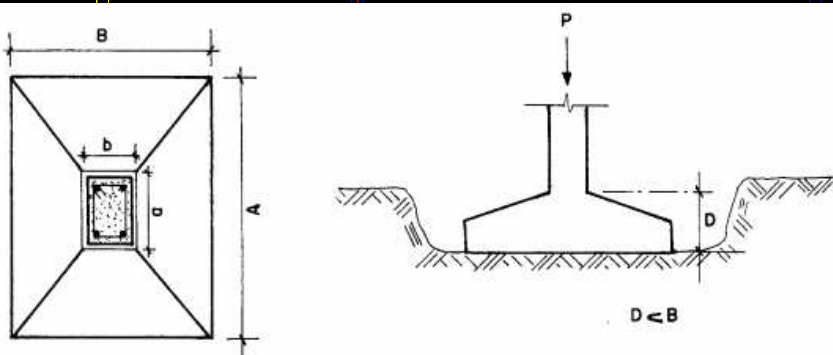
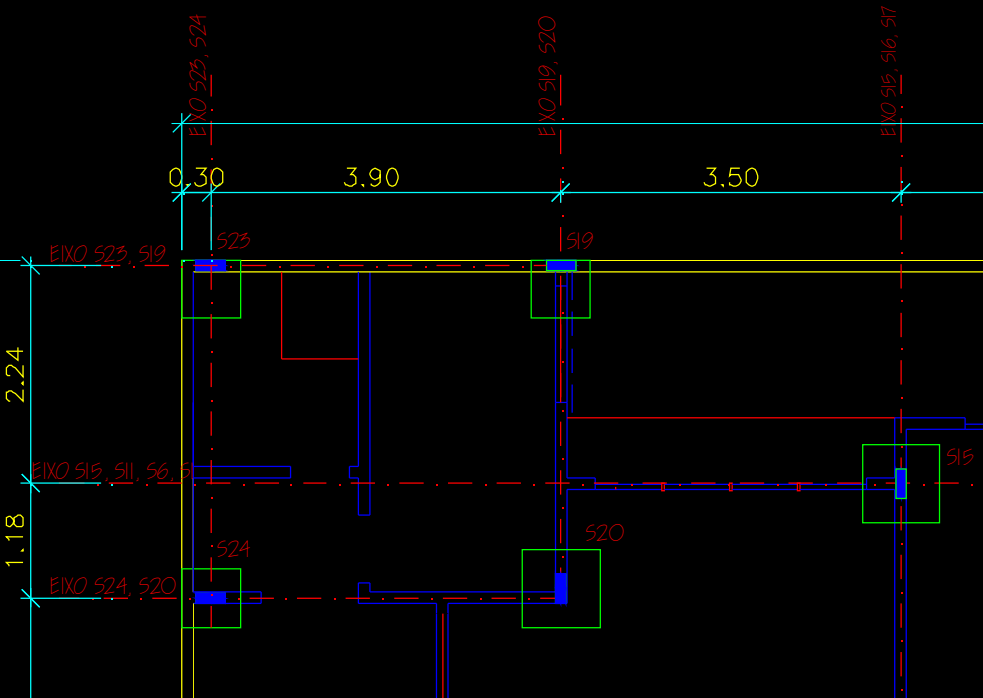


Figura 3.12 - Sapata isolada retangular

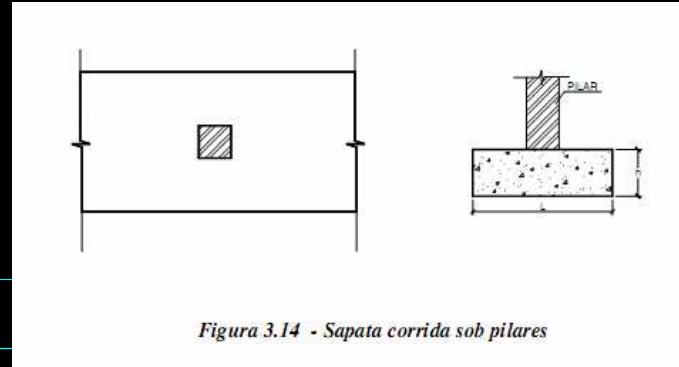


Figura 3.14 - Sapata corrida sob pilares

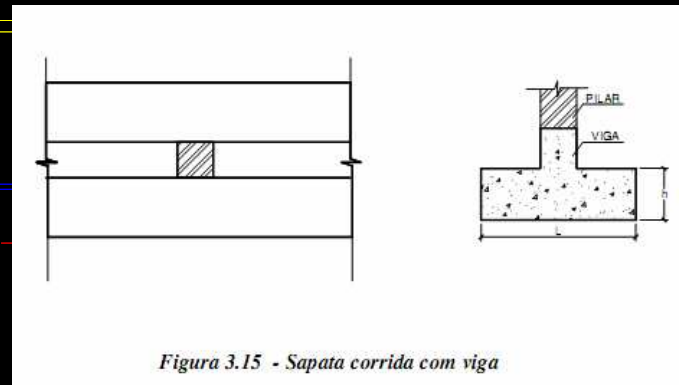


Figura 3.15 - Sapata corrida com viga

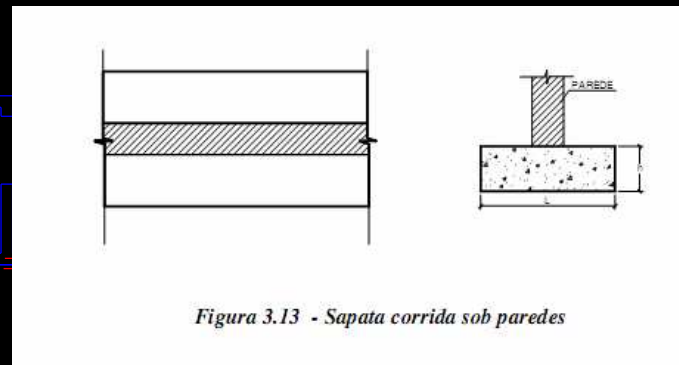
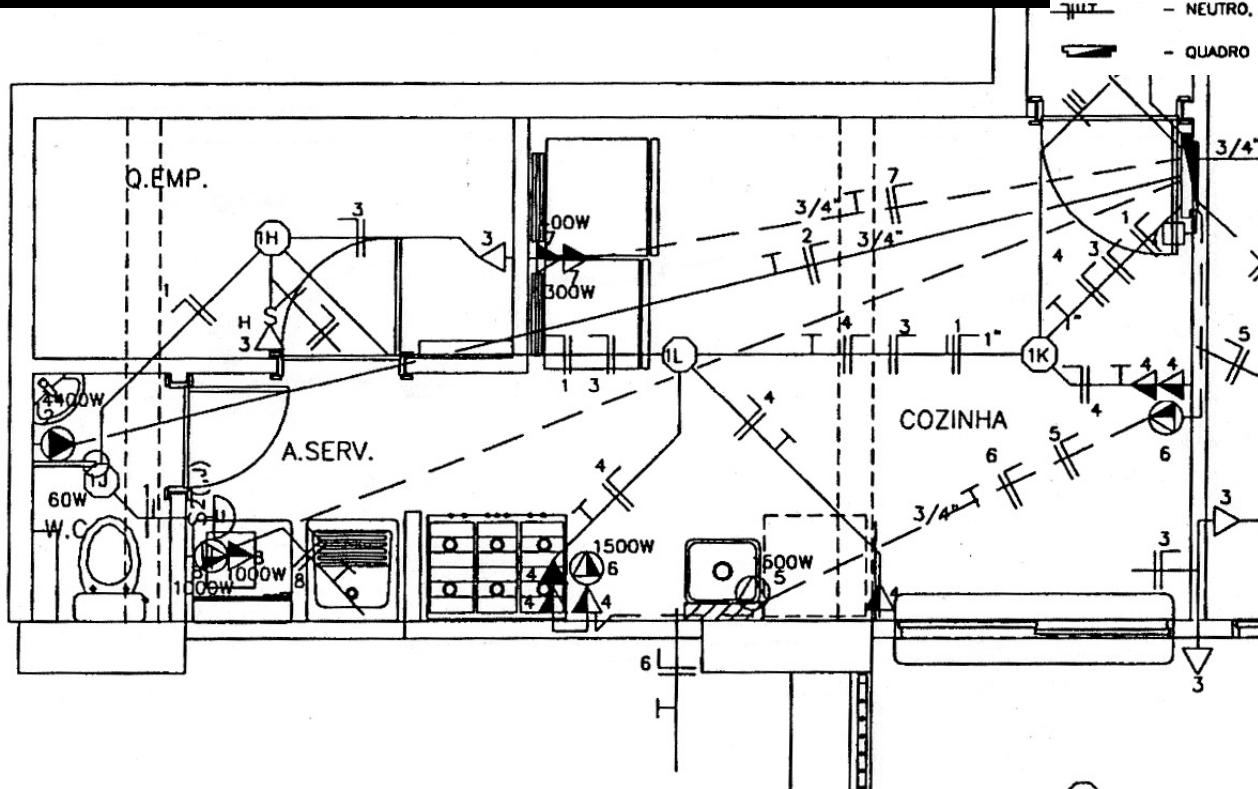


Figura 3.13 - Sapata corrida sob paredes

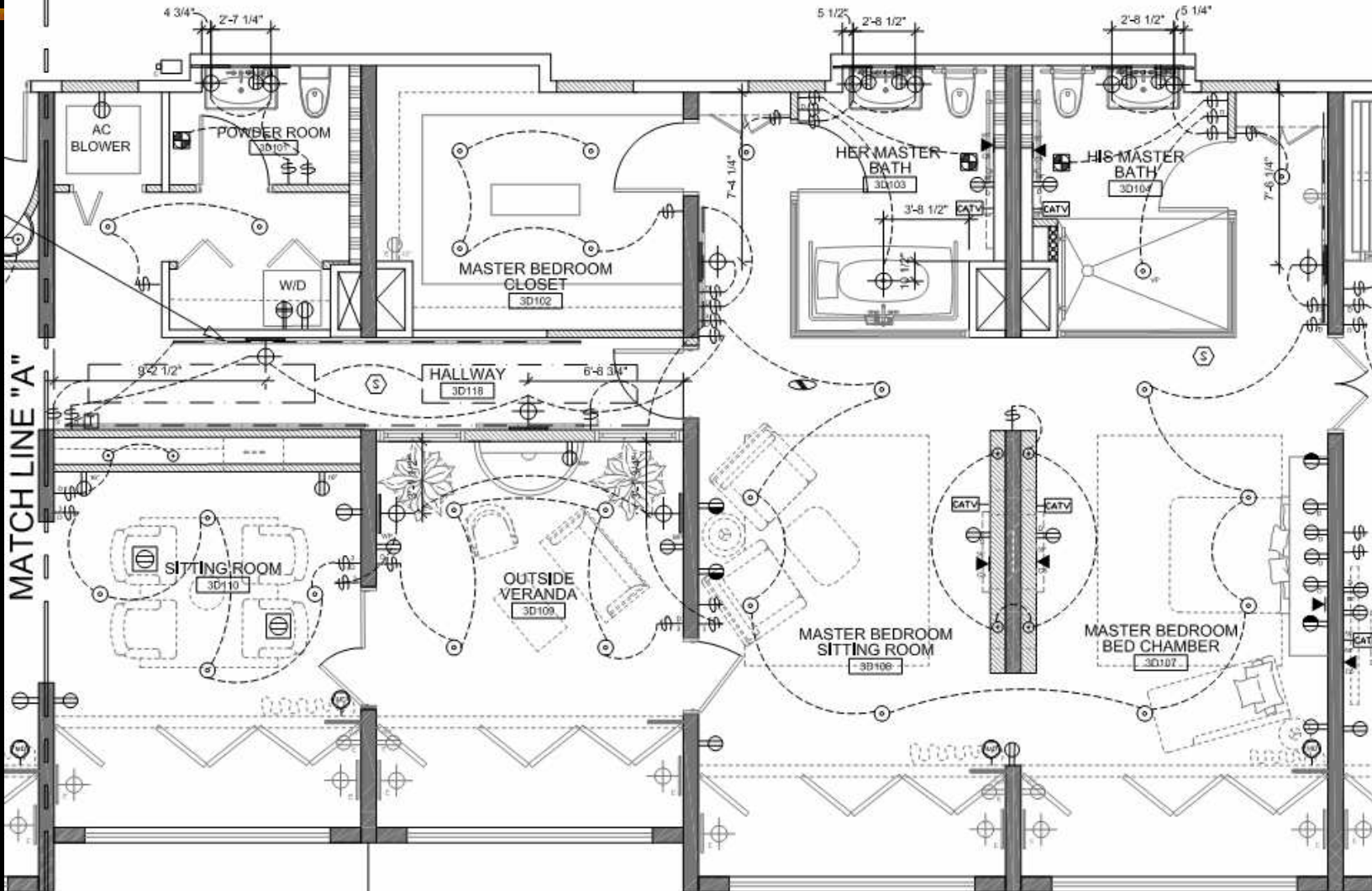
# elétrica

## SIMBOLOGIA

- — — — — - TUBULAÇÃO DE ELÉTRICA NO TETO OU ALVENARIA
- — — — — - TUBULAÇÃO DE ELÉTRICA NO PISO
- (with circle) - LÂMPADAS FLUORESCENTE
- (with dot) - PONTO DE LUZ NO TETO
- ◐ (with dot) - PONTO DE LUZ NA PAREDE
- ▽ (with dot) - TOMADA BAIXA
- ▽ (with dot) - TOMADA MÉDIA
- ▶ (with dot) - TOMADA ALTA
- ⊗ (with dot) - TOMADA DE FORÇA BAIXA
- ⊗ (with dot) - TOMADA DE FORÇA ALTA
- ⊞ (with dot) - CAMPAINHA
- ⊞ (with dot) - INTERRUPTOR DE CAMPAINHA
- S - INTERRUPTOR SIMPLES
- S<sub>2</sub> - INTERRUPTOR DE DUAS SEÇÕES
- S<sub>3</sub> - INTERRUPTOR DE TRES SEÇÕES
- S<sub>3W</sub> - INTERRUPTOR THREE-WAY
- — — — — (with T) - NEUTRO, FASE, RETORNO, RETORNO CAMPAINHA, TERRA
- — — — — (with T) - QUADRO DE DISTRIBUIÇÃO LUZ



HOTEL CORRIDOR



MATCH LINE "A"

AC BLOWER

POWDER ROOM  
3D107

W/D  
3D102

MASTER BEDROOM CLOSET  
3D102

HALLWAY  
3D118

SITTING ROOM  
3D110

OUTSIDE VERANDA  
3D109

HER MASTER BATH  
3D103










HIS MASTER BATH  
3D104

MASTER BEDROOM SITTING ROOM  
3D106

MASTER BEDROOM BED CHAMBER  
3D107

## SYMBOL LEGEND

### POWER POINTS











-  DUPLEX RECEPTACLE
-  FLOOR MOUNTED RECEPTACLE
-  FLOOR MOUNTED RECEPTACLE
-  SWITCHED DUPLEX RECEPTACLE
-  GROUND FAULT INTERRUPTED CIRCUIT  
@ 42" UNLESS OTHERWISE NOTED.
-  WATERPROOF ENCLOSURE GFI RECEPTACLE
-  DEDICATED ELECTRICAL LINE
-  EXISTING POWER AND SIGNAL DEVICES
-  220 VOLT RECEPTACLE

 ELECTRICAL PANEL




### SWITCH OUTLETS

-  SINGLE SWITCH
-  THREE-WAY SWITCH
-  FOUR-WAY SWITCH
-  DIMMER SWITCH
-  LIFEWARE CONTROLLER DEDICATED  
AUTOMATION CONTROLLER
-  ELECTRICAL SWITCHING

## LIGHTING

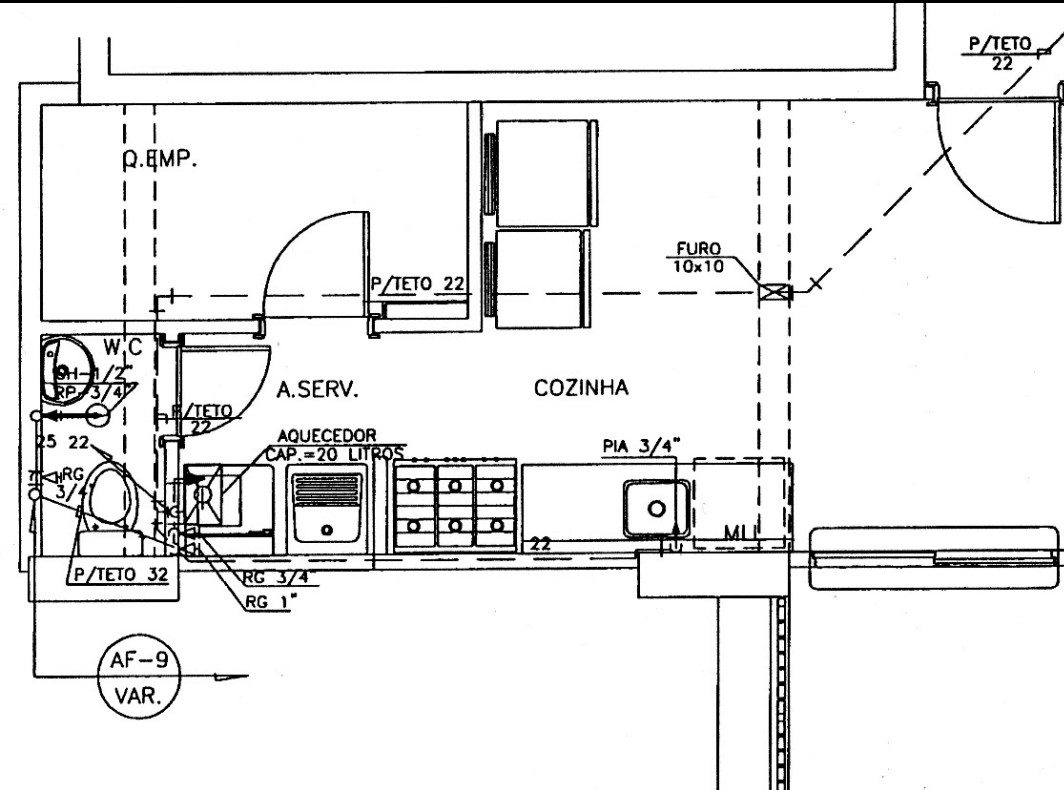
-  RECESSED DOWNLIGHT-INCANDESCENT
-  RECESSED LOW VOLTAGE DOWNLIGHT
-  CEILING MOUNT INCANDESCENT
-  PENDANT
-  VAPOR PROOF RECESSED DOWNLIGHT
-  CHANDELIER- HALGEN
-  LED LIGHTING-INCANDESCENT
-  WALL SCONCE
-  UNDER CABINET COVE LIGHTING
-  DIRECTIONAL DOWNLIGHT, ARROW  
INDICATES AIMING DIRECTION

## MISCELLANEOUS

-  SECURITY CAMERA
-  CABLE TV
-  TELEPHONE
-  P.O.T.S. FAX LINE
-  CAT-5e NETWORK DROP
-  WIRELESS NETWORK ACCESS POINT
-  EXHAUST FAN
-  DOOR BELL
-  THERMOSTAT
-  SMOKE AND CO2 DETECTOR
-  MOTORIZED DRAPERY ROD



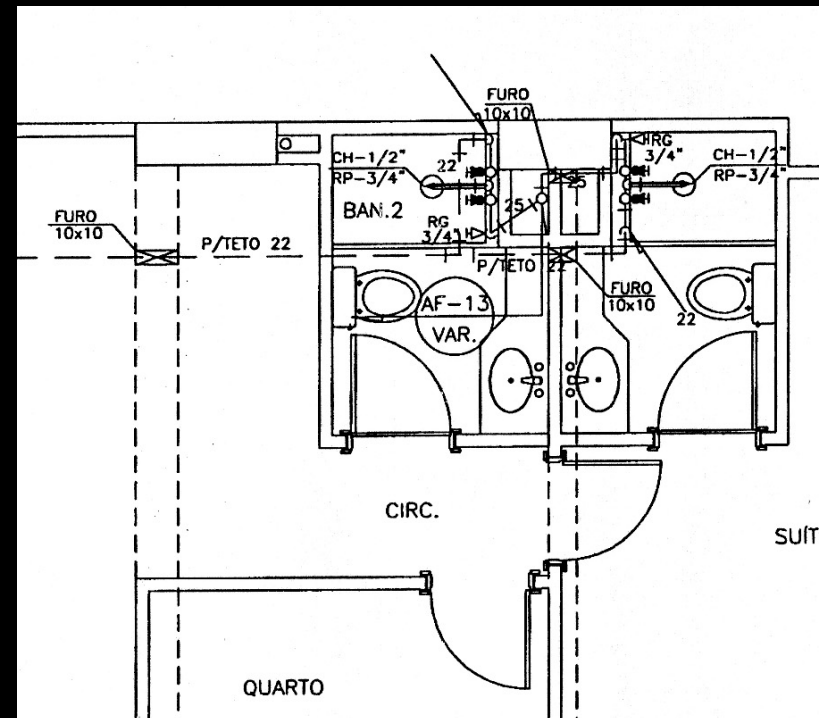
# hidráulica



## SIMBOLOGIA

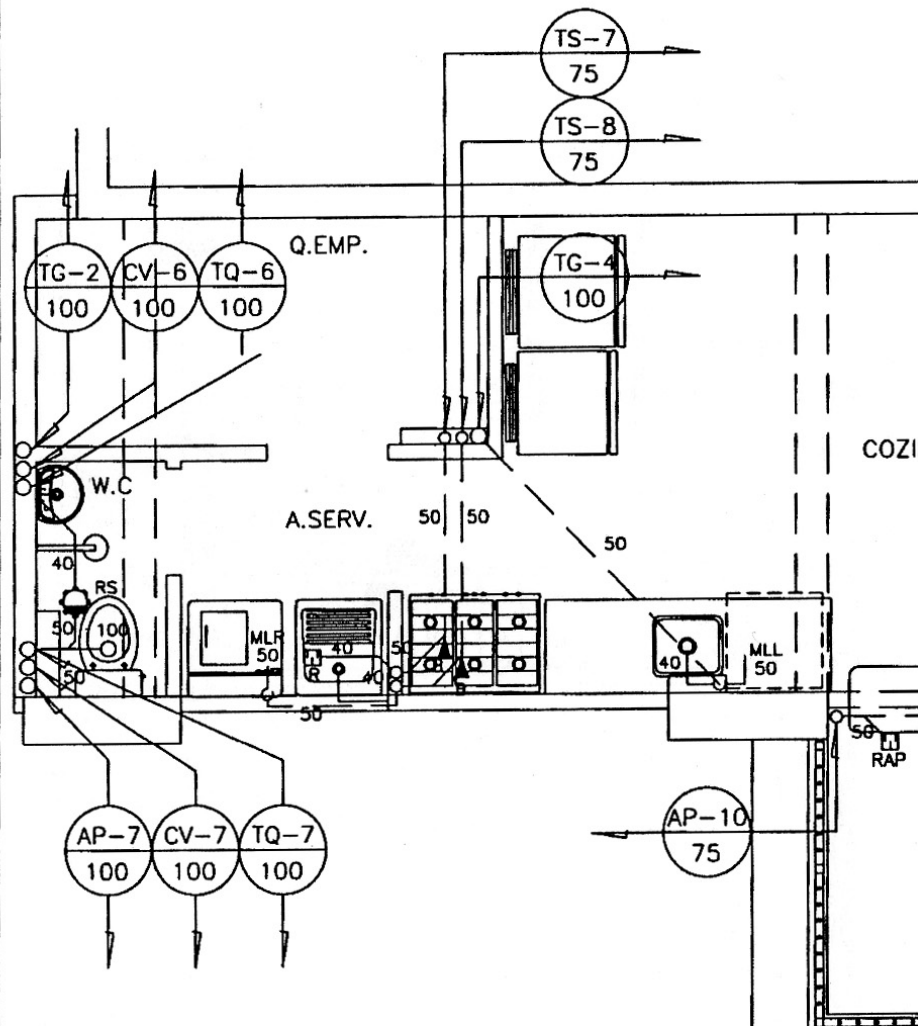
- TUBULAÇÃO DE ÁGUA FRIA
- - - TUBULAÇÃO DE ÁGUA QUENTE
- TUBULAÇÃO DE DRENO

- RE - REGISTRO DE ESFERA
- ◁ RG - REGISTRO DE GAVETA
- ◄ RP - REGISTRO DE PRESSÃO
- ▶ BR - BUCHA DE REDUÇÃO

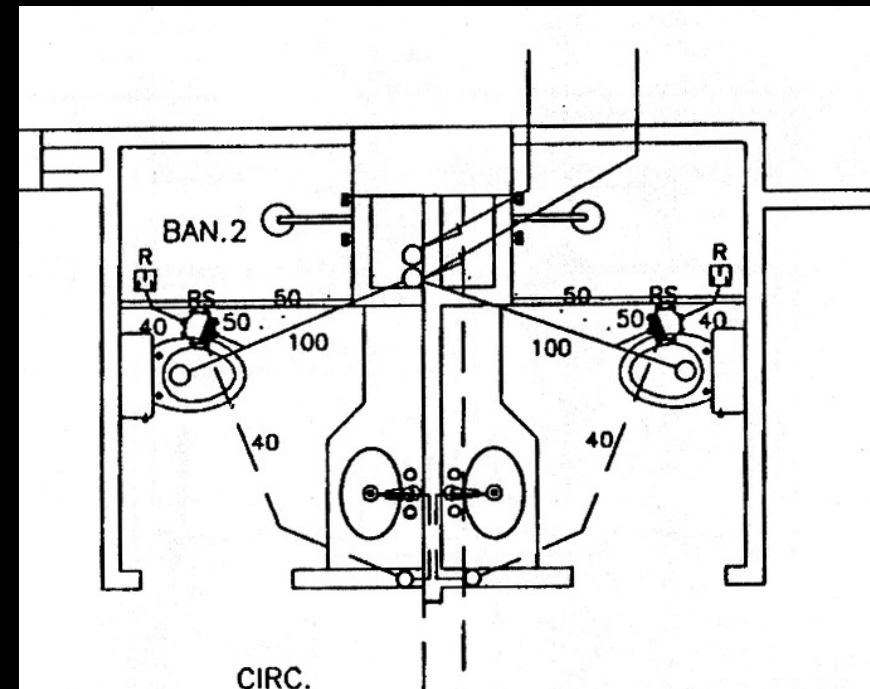




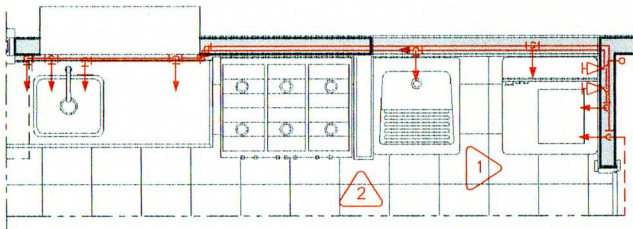
# saneamento



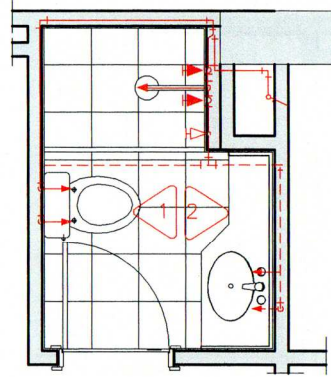
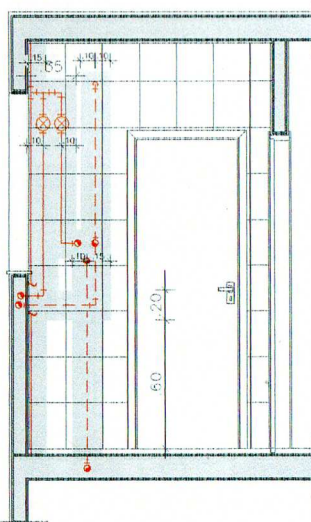
- — — — — TUBULAÇÃO PRIMÁRIA
- - - - - TUBULAÇÃO SECUNDÁRIA
- ..... TUBULAÇÃO DE VENTILAÇÃO
- . - . - TUBULAÇÃO DE ÁGUAS PLUVIAIS



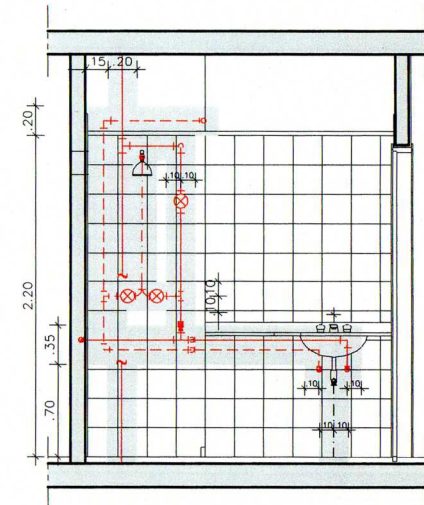
# vistas internas



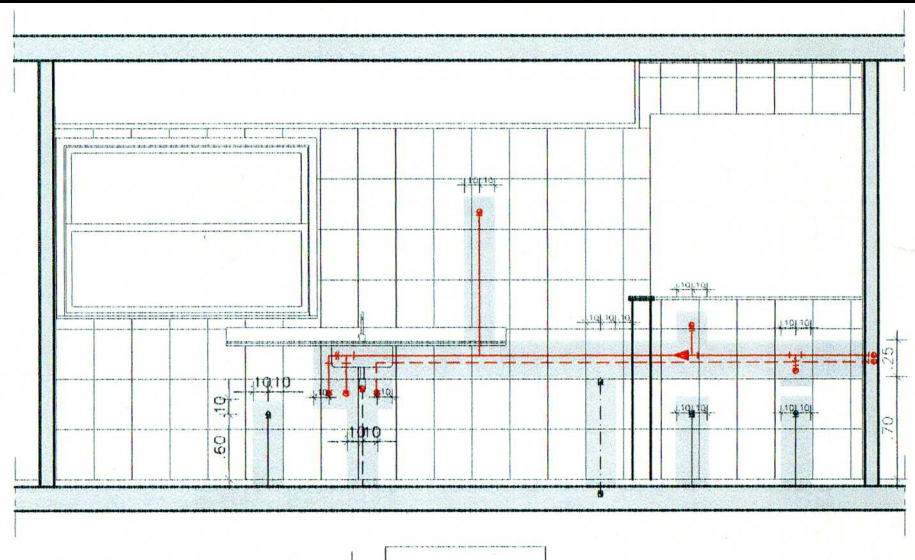
Planta Baixa da Cozinha e Area de serviço  
Desenho sem escala



Planta Baixa  
Desenho sem escala

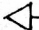


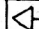





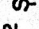
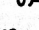
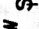
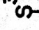
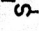





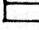
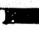
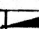
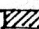
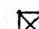
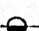


Detalhe 02 - Vista  
Desenho sem escala



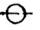








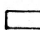


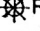
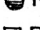
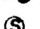
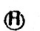
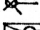

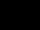
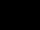
## INSTALAÇÃO ELÉTRICA

-  - TOMADA BAIXA H = 0.15
-  - TOMADA MÉDIA H = 0.95
-  - TOMADA ALTA H = 1.80
-  - TOMADA NO PISO
-  - TOMADA BAIXA P/AR CONDIC. H = 0.15
-  - TOMADA ALTA P/AR CONDIC.
-  - TELEFONE EXTERNO
-  - TELEFONE INTERNO
-  - INTERRUPTOR SIMPLES - H = 0.95
-  - INTERRUPTOR 2 SEÇÕES - H = 0.95
-  - INTERRUPTOR 3 SEÇÕES - H = 0.95
-  - INTERRUPTOR THREE-WAY - H = 0.95
-  - INTERRUPTOR MINUTERIA - H = 0.95
-  - CAMPAINHA - H = 0.95
-  - PONTO DE LUZ NO TETO
-  - PONTO DE LUZ NO REBAIXO
-  - MINUTERIA
-  - ARANDELA H = 1.80
-  - FLUORESCENTE
-  - QUADRO DE FORÇA
-  - QUADRO DE LUZ
-  - QUADRO DE TELEFONE
-  - CX. TELEFONE
-  - ANTENA DE TV/SOM
-  - PARA RAIOS

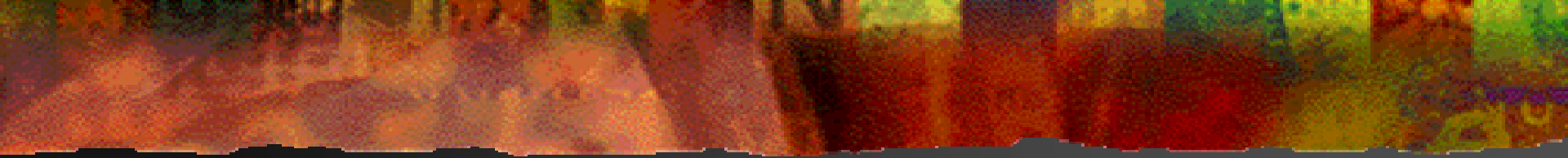
## INSTALAÇÃO ELÉTRICA

-  - HASTE TERRA
-  - CIGARRA H = 1.95
-  - AUTOMÁTICO DE BÓIA
-  - REFLETOR
-  - EXTINTOR DE INCÊNDIO

## INSTALAÇÕES HIDRO-SANITÁRIAS

-  - CX. INSPEÇÃO
-  - CGS - CX. GORDURA SIMPLES
-  - CGD - CX. GORDURA DUPLA
-  - CS - CX. SIFONADA
-  - CA - CX. DE AREIA
-  - CGE - CX. GORDURA ESPECIAL
-  - CGI - CX. GORDURA INDIVIDUAL
-  - PV - VISITA
-  - FS - FOSSA SÉPTICA
-  - S - SUMIDOURO
-  - RS - RALO SIFONADO
-  - RH - RALO HEMISFÉRICO (ABACAXI)
-  - RS/TC - SIFONADO TAMPA CEGA
-  - R - RALO SIMPLES 10x10
-  - GRELHA
-  - TORNEIRA (JARDIM)
-  - RG - REGISTRO GERAL
-  - FILTRO H = 1.80 (PAREDE)
-  - SPRINKLER
-  - HIDRÔMETRO
-  - DF - DETETOR FUMAÇA
-  - PUNTO DE GÁS
-  - AQ - AQUECEDOR H = 1.35
-  - PRUMADA DE GÁS
-  - CHAMINÉ DO AQUECEDOR





fim