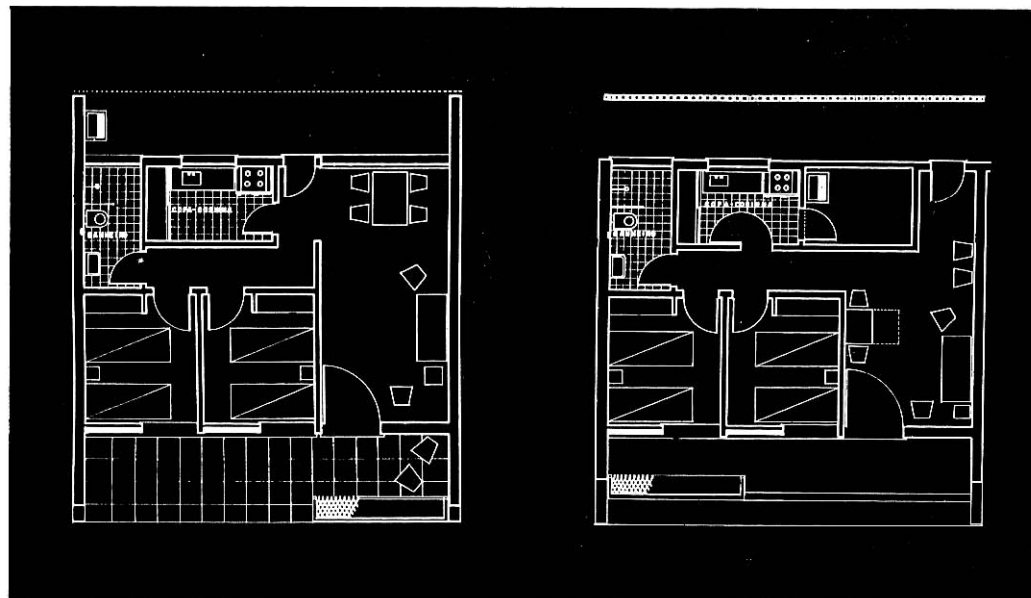
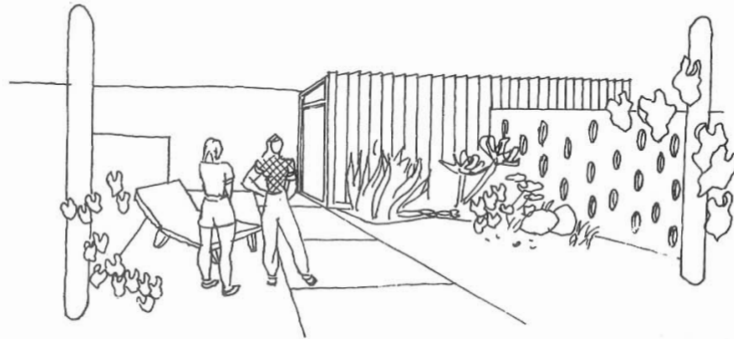
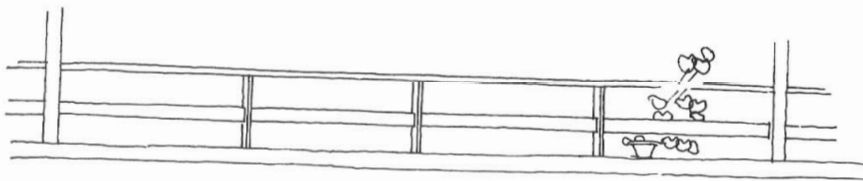
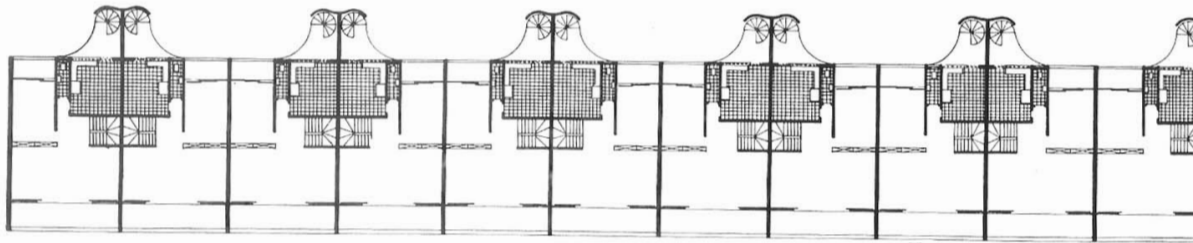
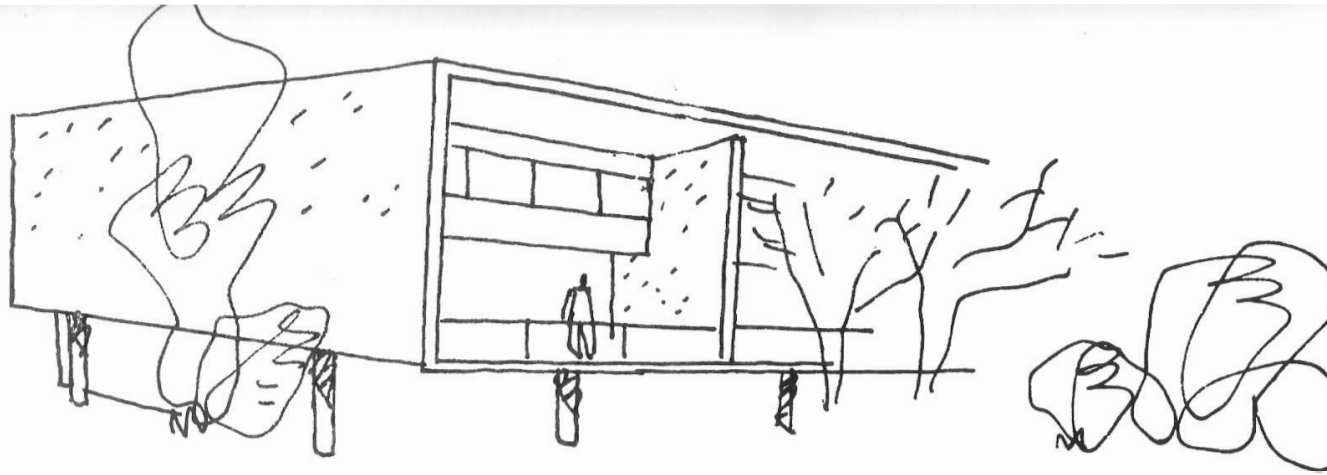


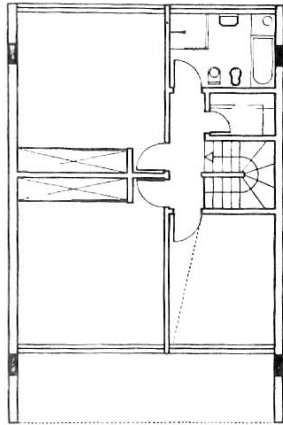
ground floor unit

second floor

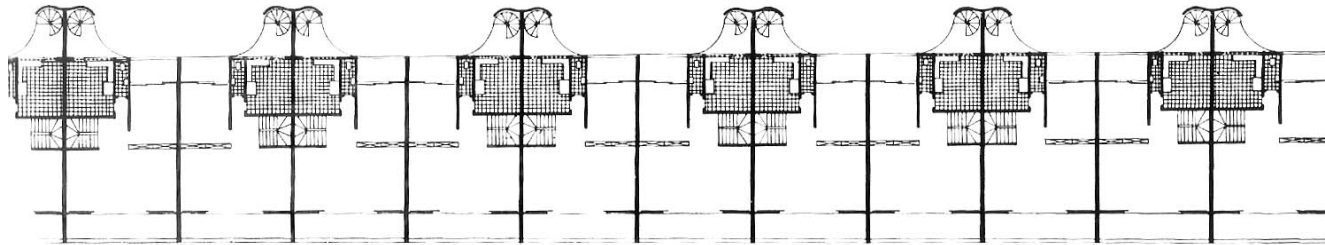
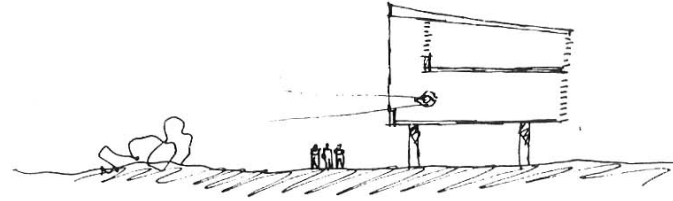
Apartments for maintenance workers at the Aeronautical Training Center. Each building contains 40 apartments consisting of two bed rooms, living room, kitchen, bath room and an individual terrace. The apartments on the second floor, accessible through an open corridor, have a slight variation in plan with an additional utility room. The terraces are partially screened with wooden lattice for privacy. Photographs on this and on opposite page show the apartment blocs under construction.





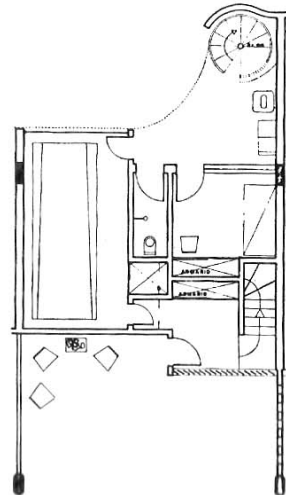


third floor

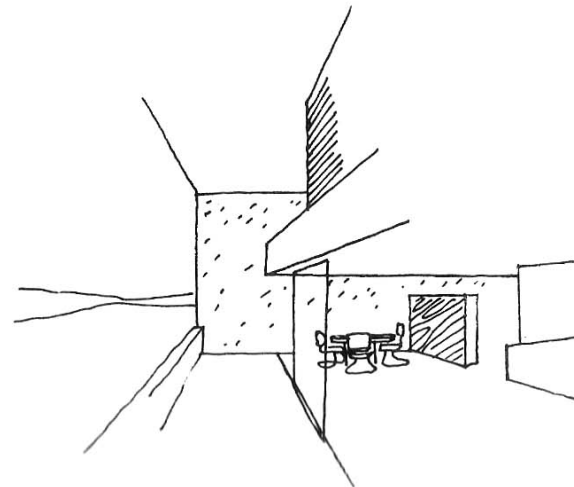


second floor unit

Row of 24 houses for technical assistants at the Aeronautical Training Center. On the ground floor of each unit there is a porch leading to an entrance hall; a garage and a maid's room complete the plan. The second floor contains a living room, dining room, kitchen, a small and a larger terrace; three bed rooms and bath are on the third floor. The entrance porch on the ground floor has a concrete screen on both sides to assure privacy. An outdoor, spiral stair links the ground floor with the kitchen. Opposite page, bottom: sketch of the entrance porch, and, on this page, sketch of the living room terrace.



ground floor



Projeto do Espaço Residencial 2 – 2009.02  
Will Bruder . Lloloma 5 apartments . Arizona USA

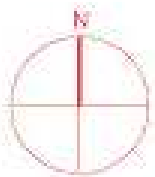
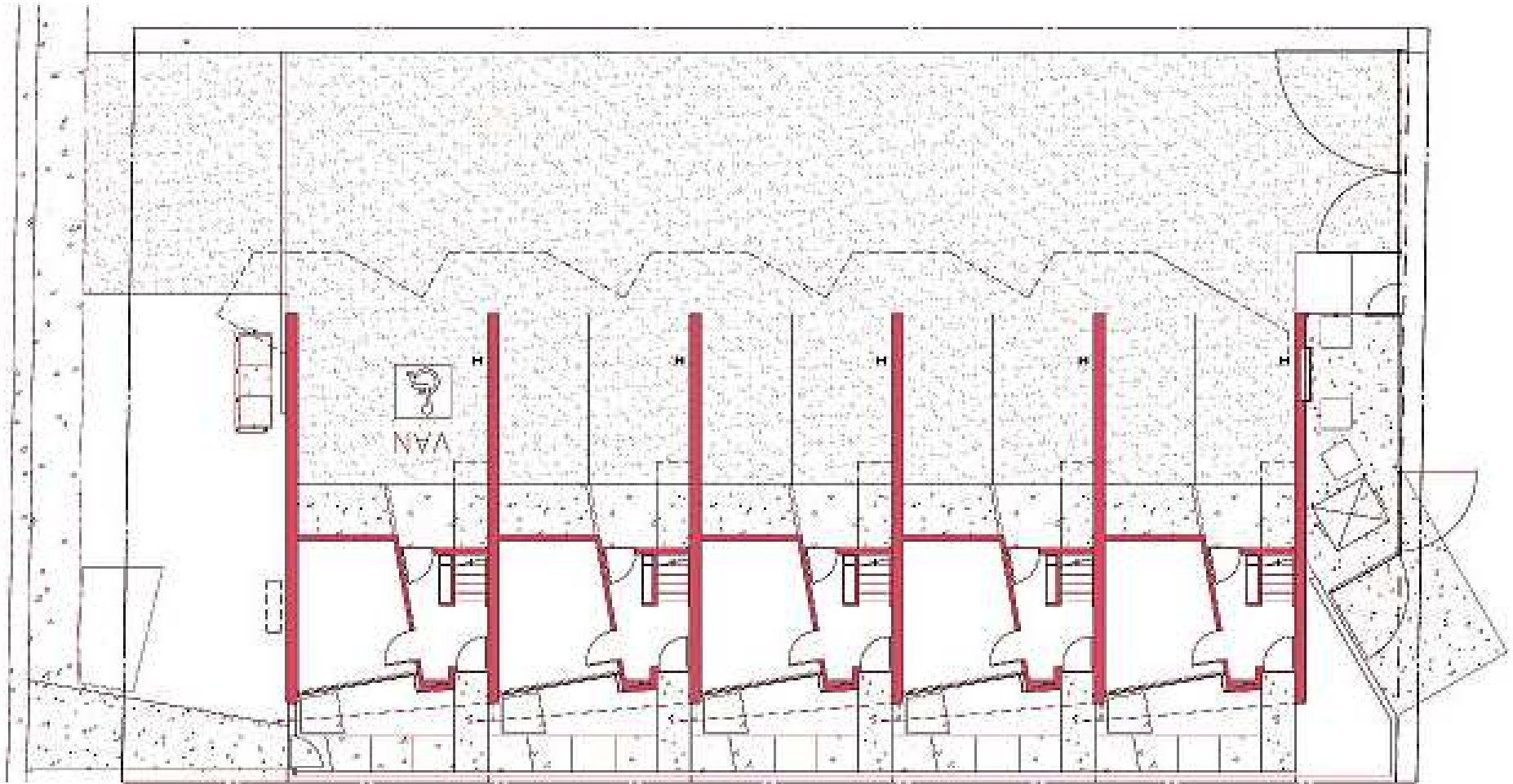


Projeto do Espaço Residencial 2 – 2009.02  
Will Bruder . Lloloma 5 apartments . Arizona USA



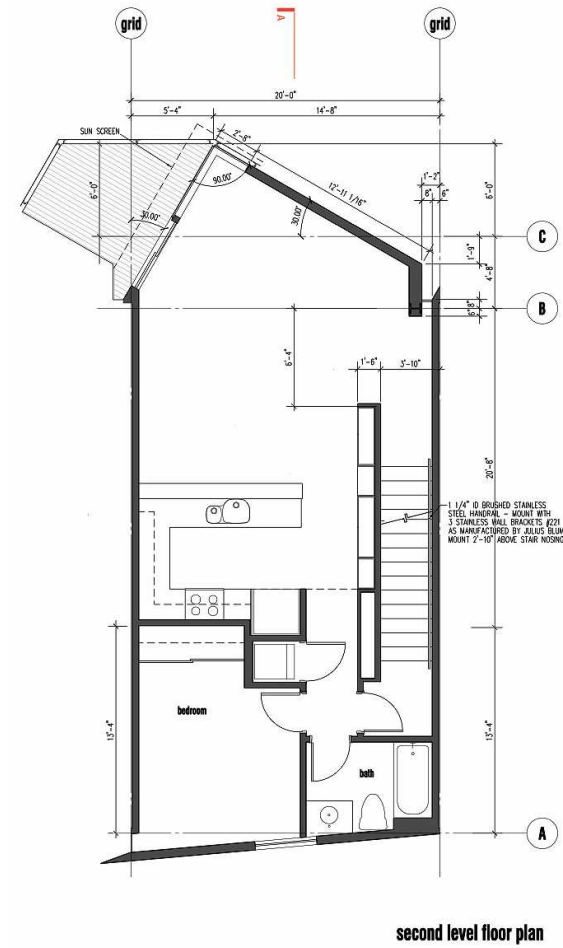
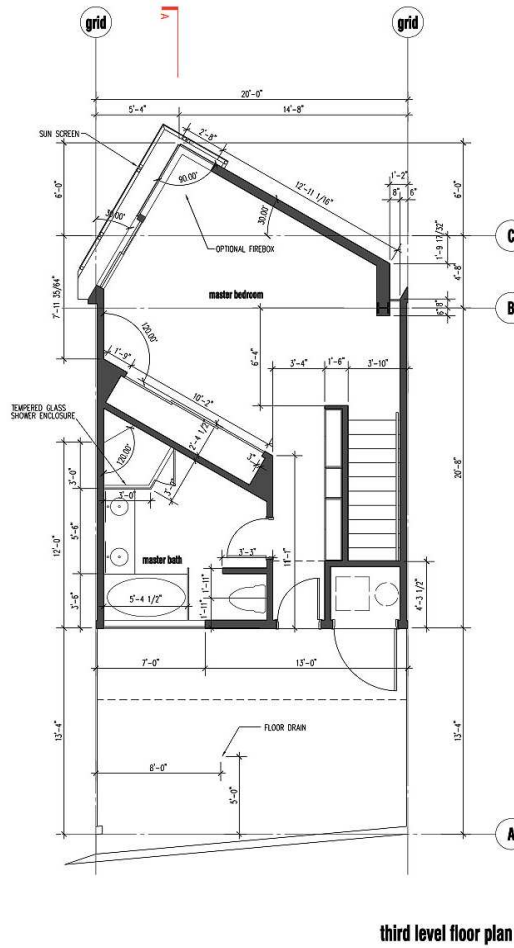
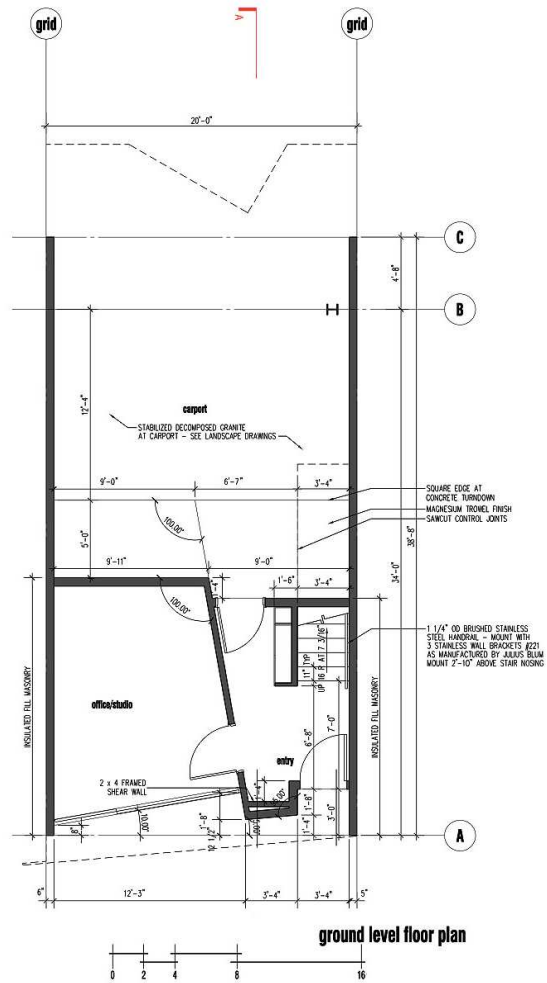
Projeto do Espaço Residencial 2 – 2009.02  
Will Bruder . Lloloma 5 apartments . Arizona USA

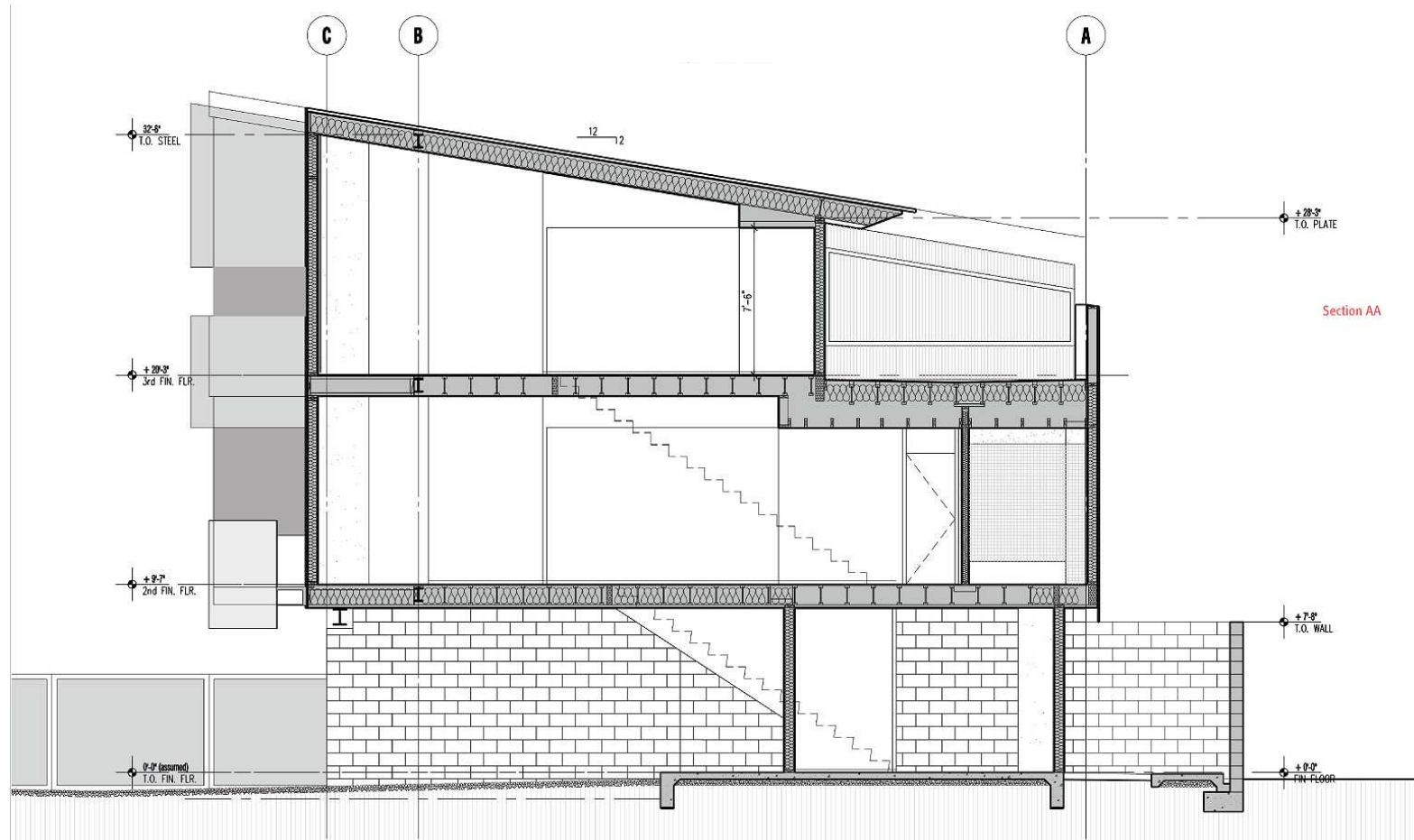




**ground level building plan**





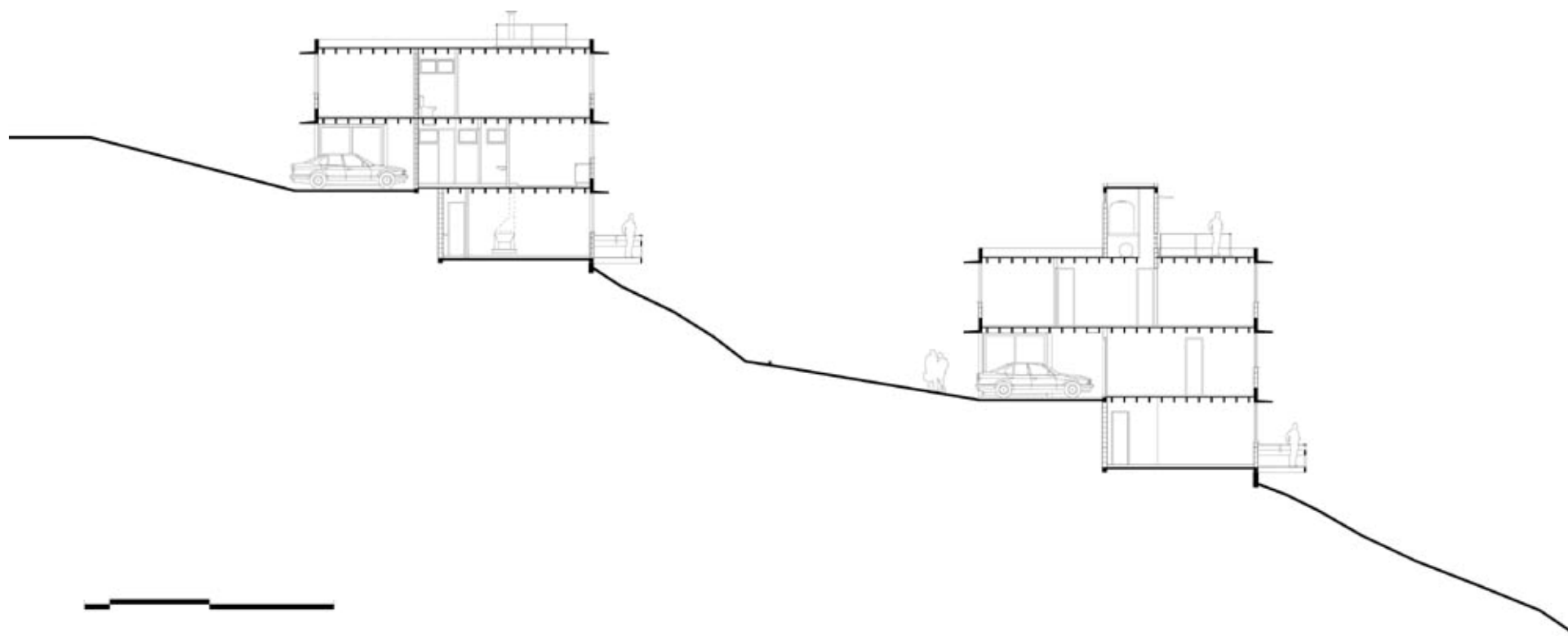


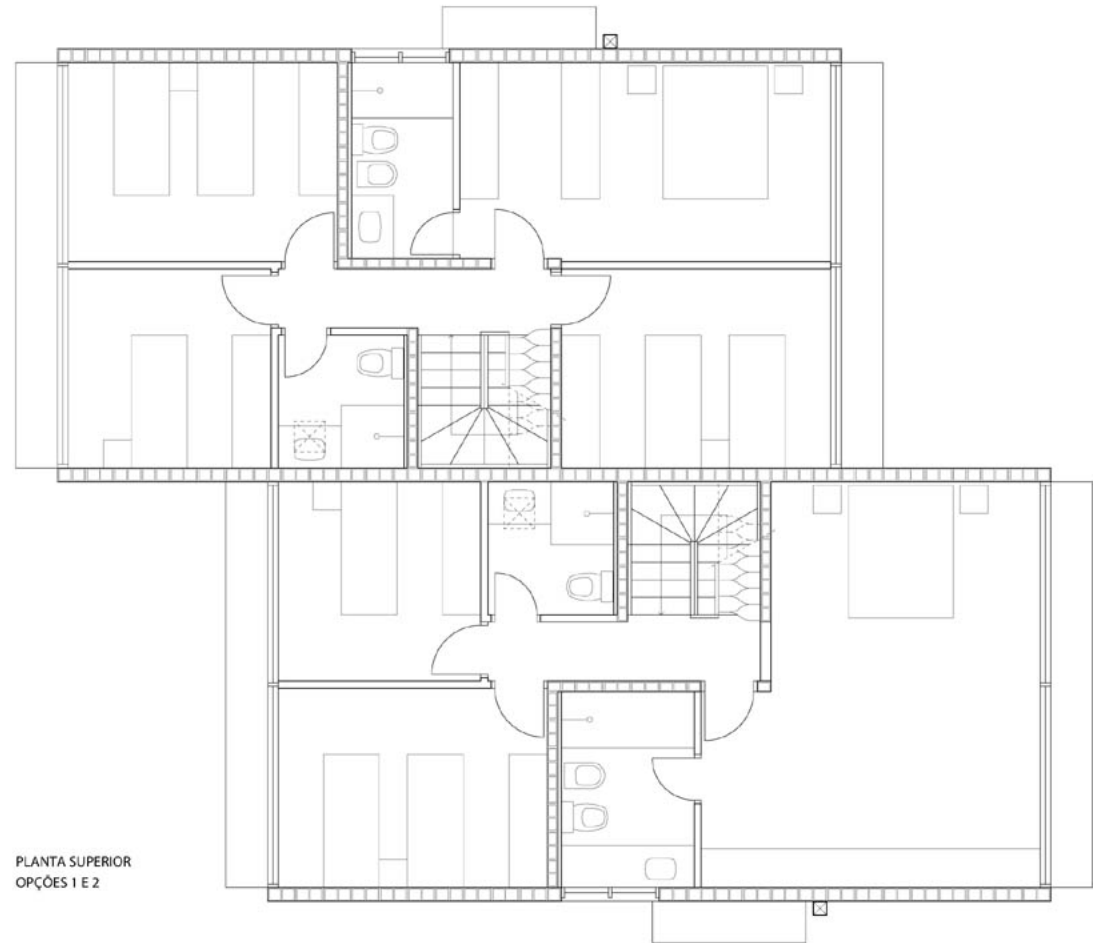
Projeto do Espaço Residencial 2 – 2009.02

Marcos Acayaba . Vila Butãnta . 1889



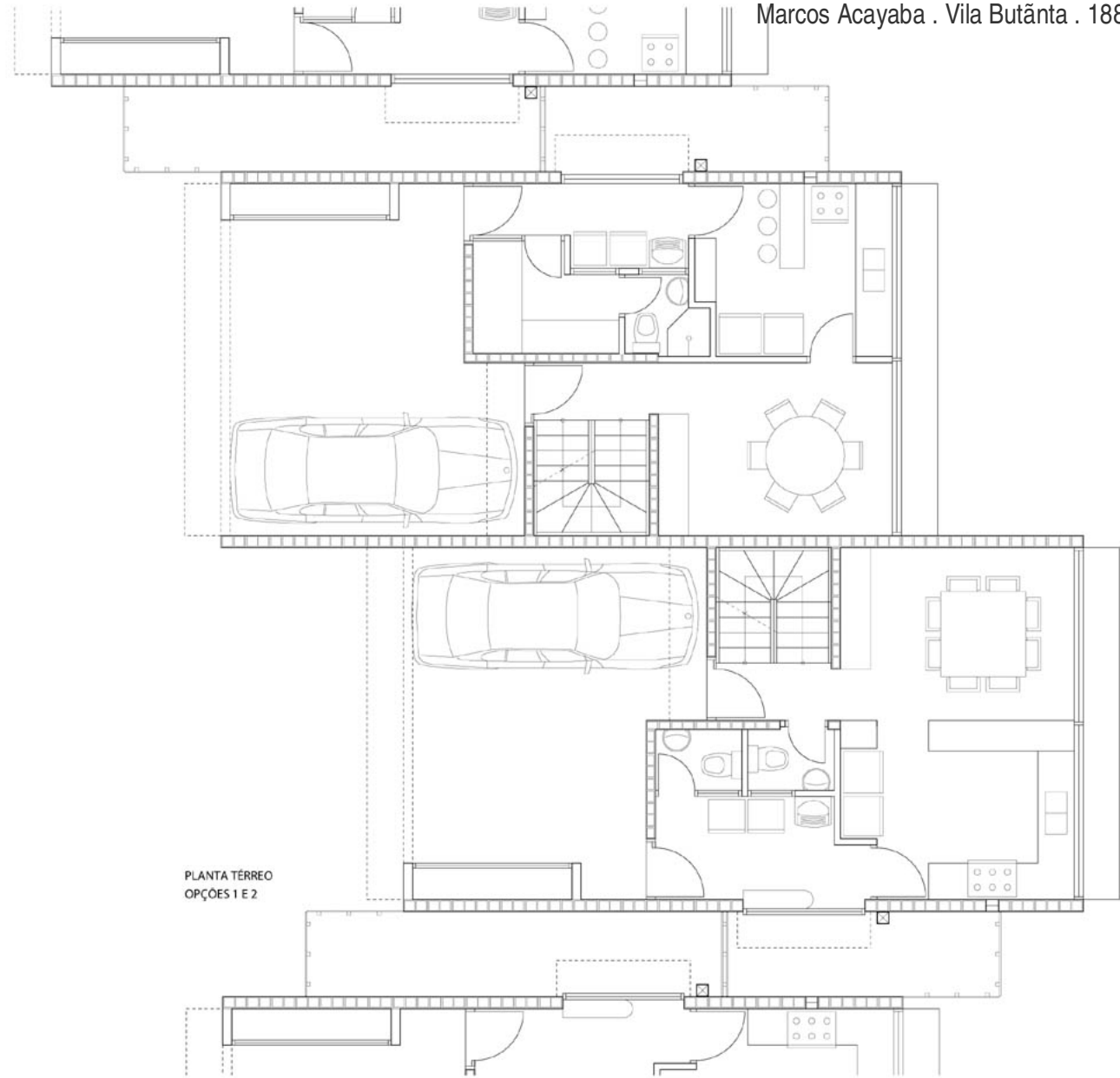






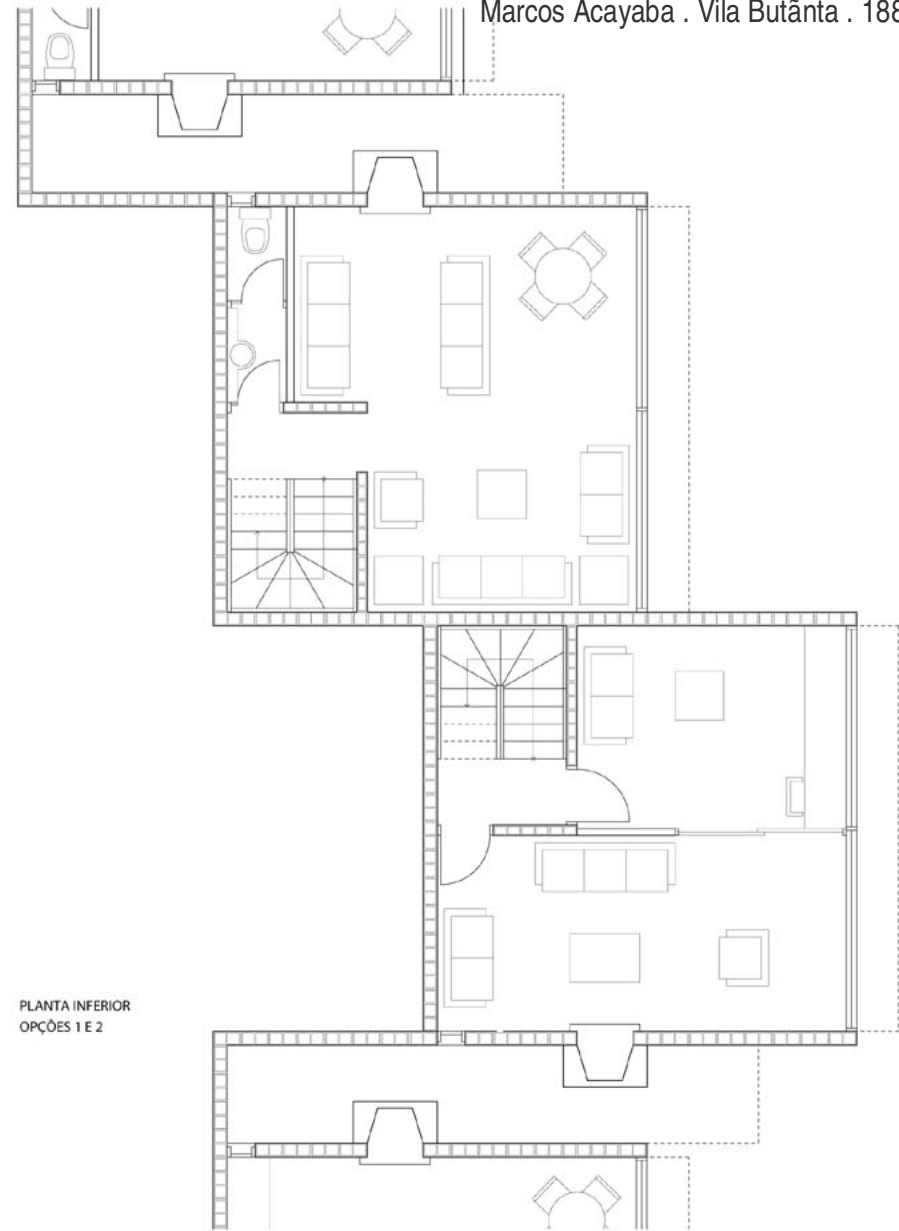
PLANTA SUPERIOR  
OPÇÕES 1 E 2





PLANTA TERREO  
OPÇÕES 1 E 2





PLANTA INFERIOR  
OPÇÕES 1 E 2

